



MANYME

MANY-ME: FRIENDLY COMMUNITY FOR DEMENTIA PATIENTS

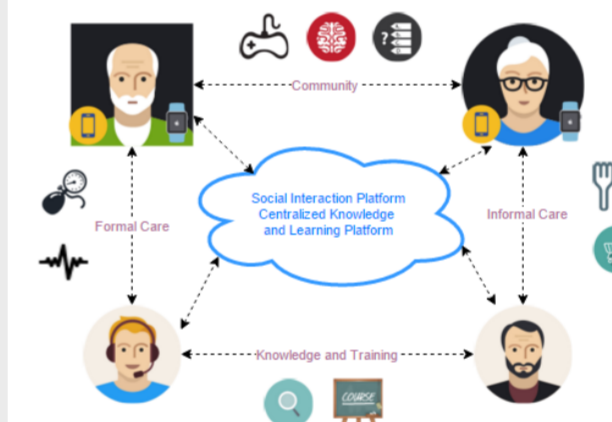
Interactive system supporting people with dementia and their caregivers

Many-Me is a system connecting people, making them feel they are not alone or helpless and empowering them to support themselves and stay active through the use of smart assistive technology. Many-Me is specifically designed for patients with mild cognitive impairment and in an early stage of dementia, as well as for their carers and community.

In this sense, the Many-Me solution creates and supports the community of people in need, their caregivers, doctors and relatives. The solution enables all beneficiaries to stay in touch and react immediately in case of any dangerous or inconvenient situation.

Many-Me is a hub of valuable services dedicated to the continuous improvement of the liaison between dementia patients and their environment. Through the registration to the Many-Me system every dementia patient becomes equipped with the direct contact to all persons involved in the circle of care and with people in similar situation.

As dementia as a disease is closely linked to ageing, Many-Me as a system is coherent not only with the idea of fostering age-friendly environments, it creates additionally the supportive community itself by means of delivering added-value innovative services and products based on in-depth analyses of user needs, expectations and requirements.



People with dementia and their family members are gradually confronted with the devastating effects of the disease. The diagnosis sometimes comes as a verdict and leads to a stressful time when patients and their beloved ones need to adapt to their new routines. In this life-changing situation, Many-Me helps patients and their community through many targeted functionalities, building their trust in the solution and confidence in the ability to manage the disease.

Moreover, the Many-Me system helps patients suffering from dementia to connect with people in similar situations through Many-Me matchmaking capabilities - to learn and exchange experiences, make new friends and engage together in collective activities.

Many-Me added value – the possibility of social engagement in safe and friendly environment – creates the main objective of the system, which is to support human contact and sense of wellbeing, allowing patients to live a meaningful and independent life. By designing a complete solution that adapts to the disease progress, Many-Me aims at helping people to live as long as possible in the familiar environment of their homes, as well as in outdoor conditions.

PROJECT COORDINATOR



MOB

Graaf Florisstraat 45
3021 CC Rotterdam
Tel. 0031 – 010 476 08 18
e-mail: info@mob.nu

Follow our social media and subscribe to our



You will find everything at
many-me.eu.

PROJECT PARTNERS



UNIVERSITÉ
DE GENÈVE

COMPEXIN

ekkotek
your future is loading



MATERIA GROUP
CARE - NURSING - REHABILITATION

EURAG
OSTERREICH

NATIONAL FUNDING AUTHORITIES



The National Centre
for Research and Development



ZonMw

ufiscdi

Schweizerische Eidgenossenschaft
Confédération suisse
Confederazione Svizzera
Confederaziun svizra
State Secretariat for Education,
Research and Innovation SERI



Research
Promotion
Foundation



The Many-Me project (AAL/Call2016/Many-Me/1/2016) is funded by AAL Programme, co-funded by the European Commission and National Funding Authorities of Austria, Cyprus, The Netherlands, Poland, Roma/nia and Switzerland.
www.aal-europe.eu

